



Saada Interfaces

Michel Laurent⁽¹⁾, Pauline Kobersi⁽²⁾

Observatoire Astronomique de Strasbourg XMM-Newton SSC⁽¹⁾ - Fr

ENSIIE Strasbourg⁽²⁾ - Fr

Laurent.michel@astro.unistra.fr

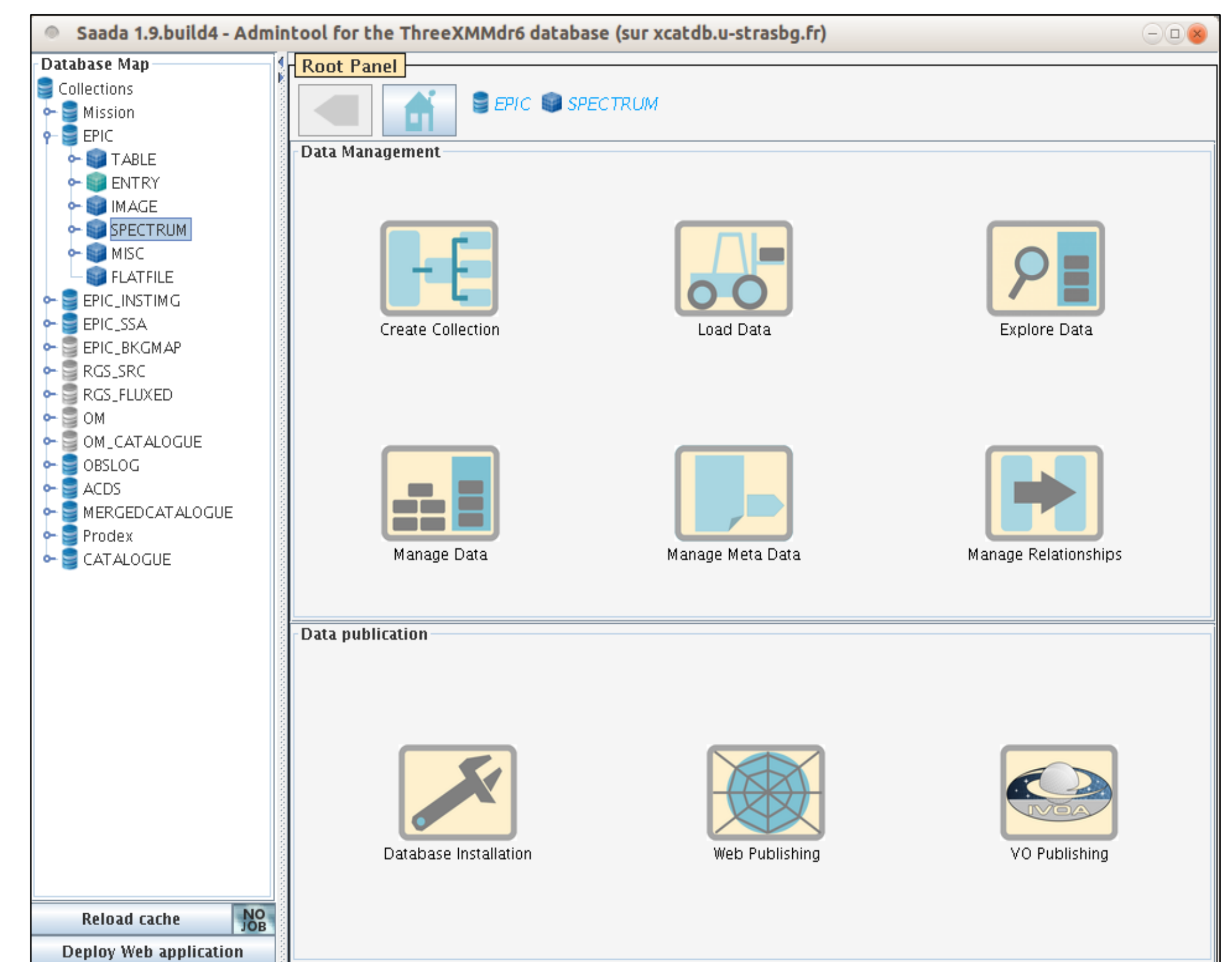
<http://saada.unistra.fr>

At a Glance

- ❑ Building local archives by the simplest way
- ❑ Hosting **multiple collections** of **heterogeneous** data
 - **Meta-data extracted** from input files (FITS or VOTables) are first **stored into the database** and then **mapped** to a common interface allowing consistent queries covering heterogeneous datasets.
 - **Data collections** can be **linked** to each other with persistent relationships usable to either show-up or filter data.
- ❑ Publishing data collections through **VO services** (SCS, SIA, SSA or TAP)

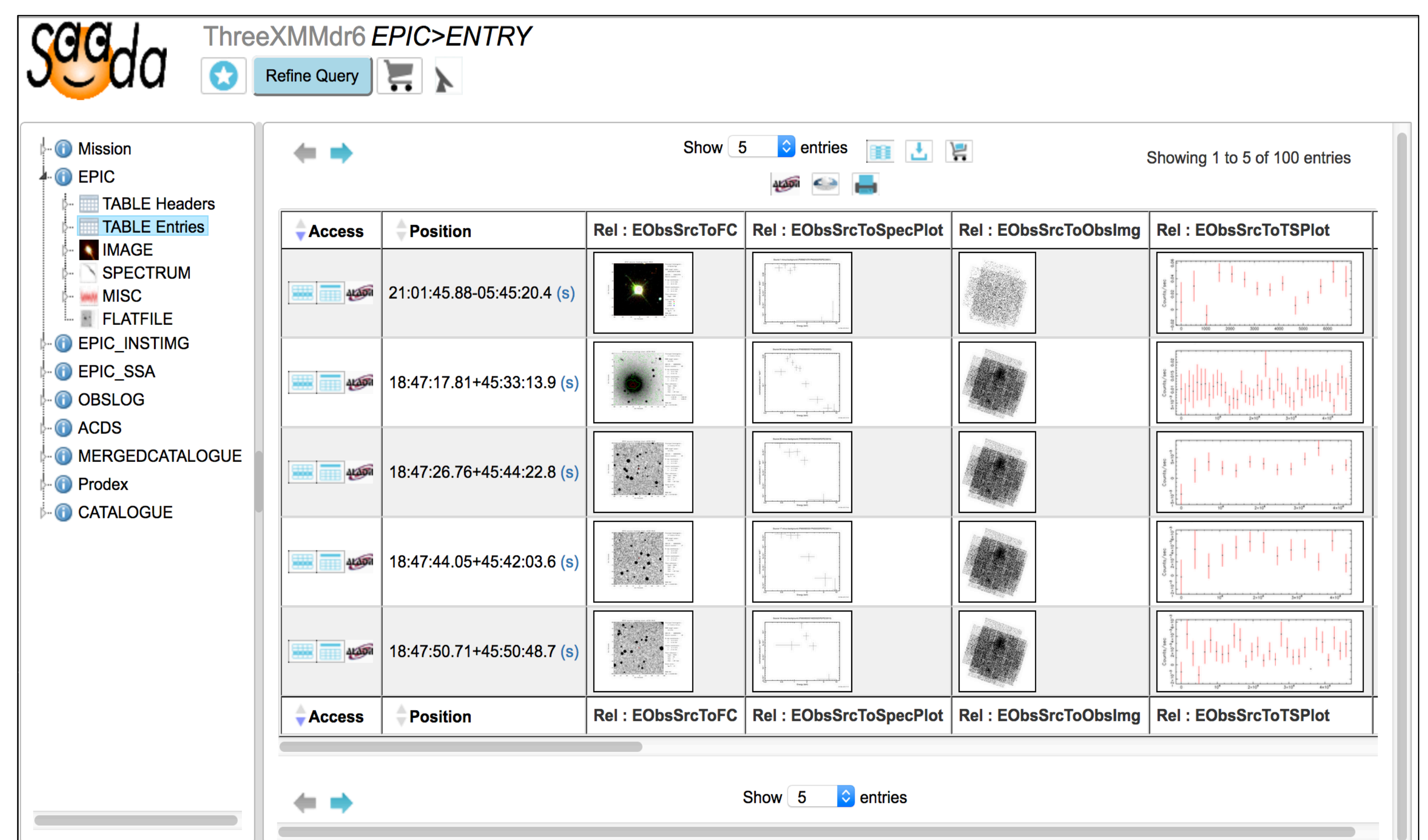
Administration

- ❑ **Graphical Administration Tool**
 - Data management (loading, removing)
 - Meta data management (description, UCDs, units...)
 - VO Publication (TAP configuration, registry helper...)
 - Database installation
- ❑ **Script Mode and API**
 - All Commands runnable by scripts
 - The API allows users to build their own Web interface or to feed another piece of software with data retrieved from the database.
- ❑ **Data Loading Management**
 - Although being enable to be operated automatically, the data loader can be configured to extract the proper meta-data.



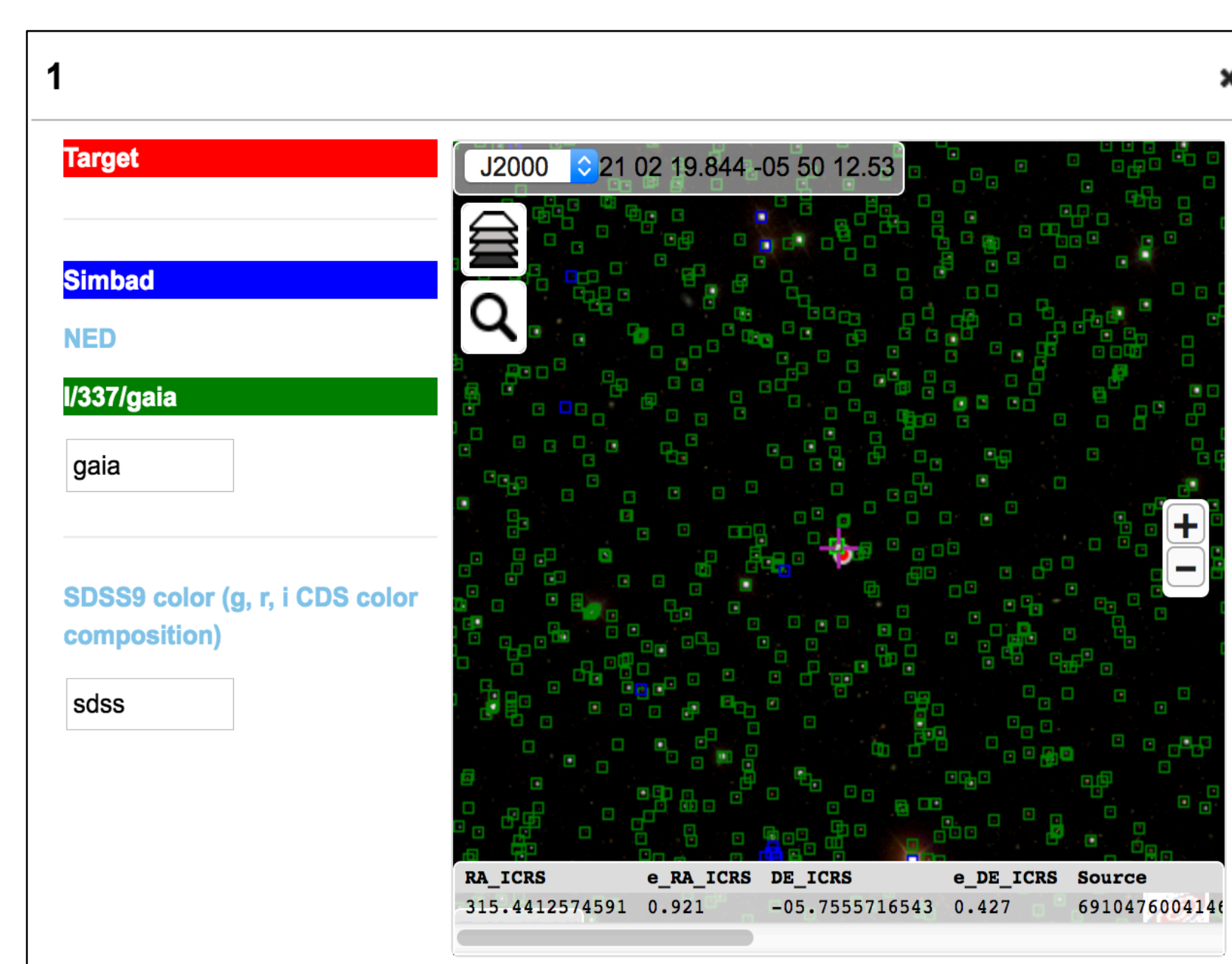
Web Interface *look at <http://xcatdb.unistra.fr/ThreeXMMdr6/>*

- ❑ *SaadaDBs* come with a **rich Web interface** automatically generated and managed.
- ❑ **Friendly Layout**
 - A Data tree for a quick look
 - Data previews displayed when available
- ❑ **Advanced Features**
 - SAMP connectivity
 - Shopping cart facility to gather data of interest
- ❑ **Complex queries**
 - Easy to setup
 - Multi-cone searches
 - Search by polygonal regions
 - Constraint stacking for complex searches



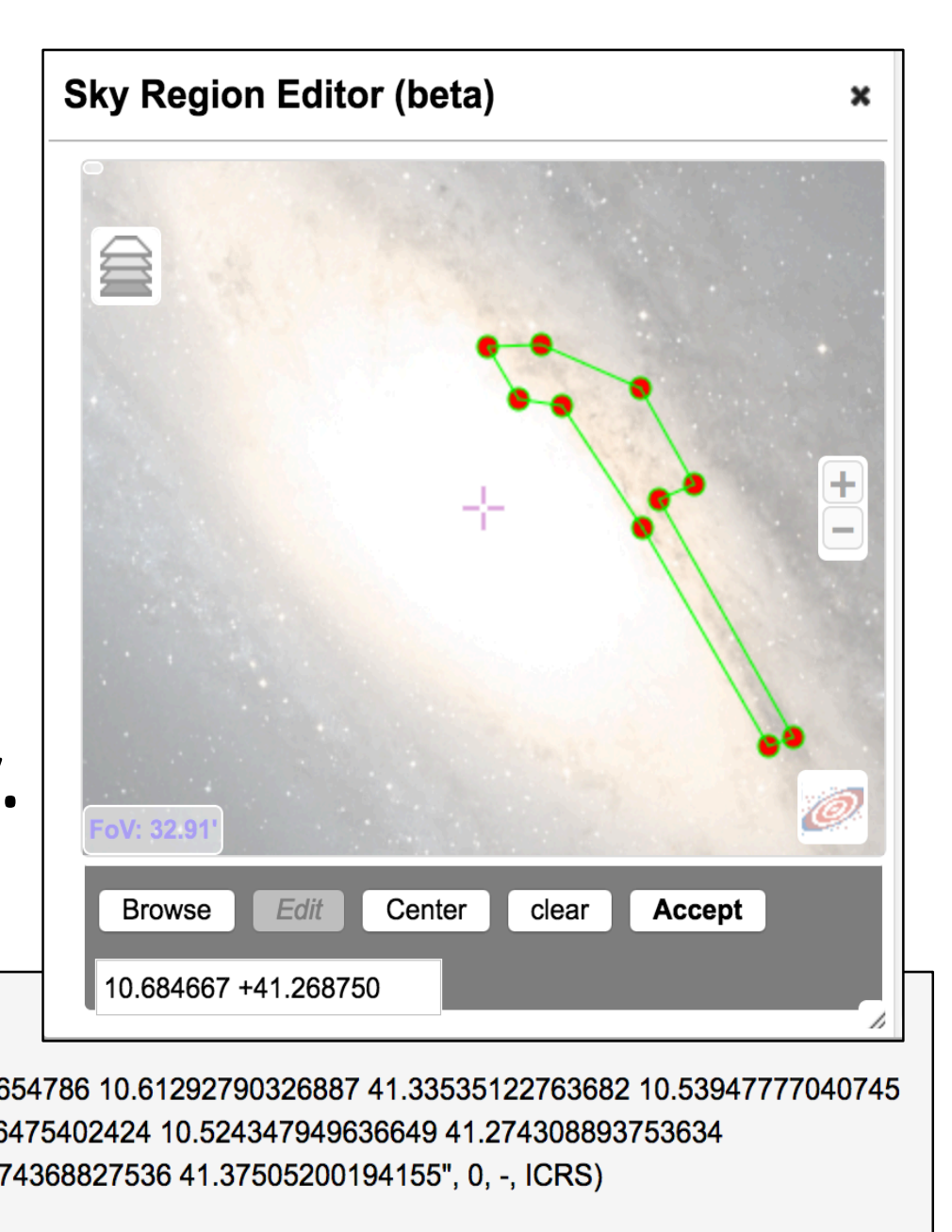
Aladin Lite #1

- ❑ Selecting only **resources covering the field of view**
 - Full text search (E band, name, description ...)
 - VizieR catalogs
 - Image surveys
- ❑ Based on the CDS MOC server



Aladin Lite #2

- ❑ *Saada* supports the search by polygonal regions.
- ❑ **Region Editor** based on AL
 - The search region is overlaid upon any survey.



I'm the Point of Contact

This project is working toward on the behalf of the SSC of XMM-Newton
It is hosted at <https://github.com/lmichel/saada>

ADASS 2016

